

RESCOM[®] Modular[™]

When Lives Are on the Line

Intrinsically Safe Confined Space/Rescue Communications System For:

- Full Duplex
- Handsfree operation
- Highly RFI Immune
- Intrinsically Safe
- Excellent communications to over 15,000 feet
- Meets OSHA requirements for communication in confined space
- Available with *DuraCORE*[™] Communication Cable, or N.F.P.A. rated Communications Rope.

The Rescom[®] Confined Space/Rescue Communications System is the ultimate in confined space communications safety. The easiest to use and most easily deployed hard line system of its kind ensures instantaneous, clear, and continuous communications in confined space, or other communications adverse environments.

All components are rated Intrinsically Safe for use in all types of Confined Spaces.

Manufactured by: Special Electronics & Designs Inc.
We are ISO 9001:2000 Registered



Standard Kits

Communication Rope or Cable *It's Your Choice.*

Rescom® offers more flexibility and versatility than other hard-line systems on the market today. Depending on your application, you may choose to use communication cable along with a standard life safety line, or you may choose to combine your communications with an N.F.P.A. compliant communications safety rope.

Standard kits with either Communications Rope or **DuraCORE™** Cable are available in O.S.H.A. compliant 3, 5 and 7 Man configurations. You also have the option of customizing any kit you choose to suit your requirements. Rescom® Modular™ kits may be expanded to include up to 10 personnel on one system.

All 5 and 7 man kits include a carrying case. Kits may be expanded to accommodate up to 10 users per system. See the Options Selection chart for details on our standard kits.

DuraCORE™ Communication Cables:
Variety of lengths available, up to 1000 ft. (405m)



DuraCORE™ Communication Cables

Often the working environment and conditions under which SED's communication equipment is routinely subjected, can be rigorous, to say the least. Communication cables in particular, have to withstand hazardous environments containing potentially damaging objects, contaminants, routine strain, and other unforeseen complications.

The unique nature of DuraCORE's construction, combined with our equally unique SEDFLEX™ jacketing, makes our cable one of the most resilient and reliable communication cables available on the market today.

Standard Lengths Available: 50' (15m), 100' (30m), 200' (61m), 300' (91m), 500' (152m), 1000' (305m)
Custom lengths can be provided if required.

The Rescom® N.F.P.A. Compliant Communications Rope

Instantaneous, clear, and continuous communications combined with a static kermantle polyester rescue rope that exceeds the 9,000 lb. 2 Man strength requirements. **The Rescom® Communication Rope also meets the N.F.P.A. requirements for life safety rope.**

The Rescom® Communications Rope can be:

- used for emergency or rescue retrieval
- rappelling and descent
- used as the primary lifeline or as backup safety line.
- submersed in water with it's connectors up to 35' without affecting function.

Basically anything you can do with a regular safety/rescue rope you can do with the Rescom Communications Rope, with the convenience of not having to drag an additional communication cable with you. **It's all in the rope!**



8

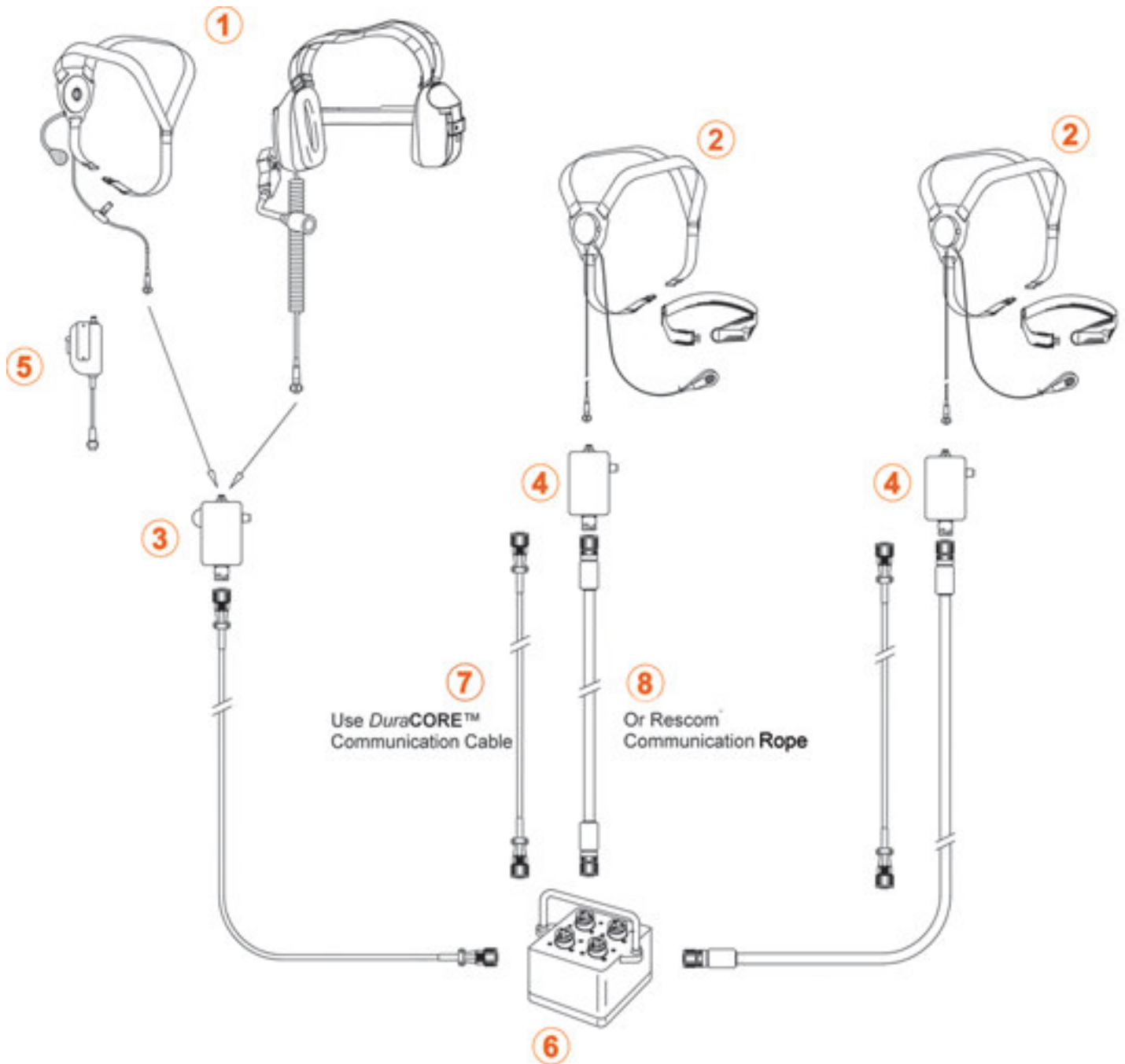


Rescom® Communications Rope: Variety colors and lengths available, up to 1500 ft. (450m)

DuraCORE™ Communication Cables Features

- Unique construction ensures greatly increased end to end cable strength from connector to connector. (> 100 lbs. Tensile strength)
- SED's unique SEDFLEX™ cable jacketing ensures excellent flexibility and durability, even in cold environments.
- Provides greater resistance to damaging industrial chemicals such as gasoline, motor oil, methanol, ethanol, and salt solutions.
- Bright blue cable jacketing makes it easy to distinguish between other cables.
- Intrinsically Safe with all Rescom® Modular™ systems.

Typical Connection Diagram



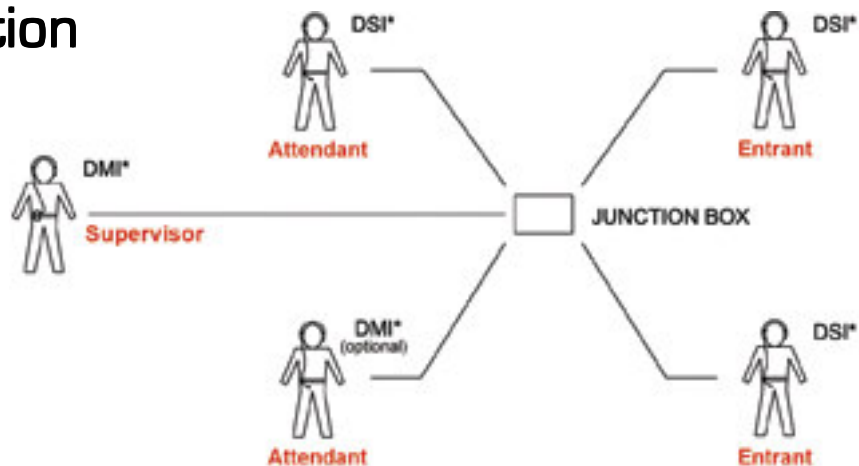
Typical Five Man Configuration

3

Power Supply: The Rescom system is powered by 3 'AA' batteries contained in the DMI Master Interface. Power redundancy can be supplied by adding another DMI unit to the system.

Average Battery Life:

- 3 Headsets = 108-138 hrs.
- 5 Headsets = 64-82 Hrs.
- 7 Headsets = 46 - 58 hrs.



Headsets

Junction Boxes & Interfaces



1 **Noise Attenuating Dual Sided Headset** with noise cancelling boom microphone. (DMI70 - S11)



1 **Supervisor - Single Sided Headset** with noise cancelling boom microphone. (DMI-S10)



2 **Double Sided Watertight Entrant Headset** with gel ear seals and noise rejecting throat microphone. (DSI-SW13/T)



2 **Single Sided Entrant Headset** with noise rejecting throat microphone. (DSI-SW12/T)



2 **Single Sided Watertight Entrant Headset** with gel ear seals and noise rejecting throat microphone. (DSI-SW14/T)



3 **DMI-S Master Interface Box** with on/off switch and volume control. Comes with reinforced vinyl pouch for belt/harness mounting.



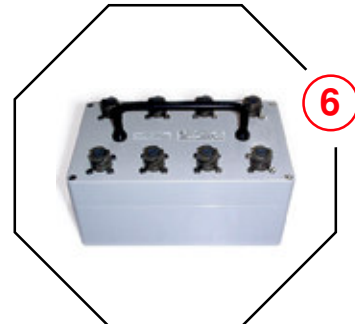
4 **DSI-S Slave Interface Box**, belt mounted with individual volume control. Comes with reinforced vinyl pouch for belt/harness mounting.



6 **4 Port Junction Box (C86H)** Sturdy PVC construction. Watertight box and connectors.



6 **6 Port Junction Box (C86H)** Sturdy ABS construction. Watertight box and connectors.



6 **8 Port Junction Box (C88H)** Sturdy ABS construction. Watertight box and connectors.

All components are rated intrinsically safe when used as a complete system, as follows:

CSA per C22.2 No. 157-92 in Canada, and U.L. per #913 in USA.

Class 1, Div. 1 Groups A,B,C,D • Class II, Div. 1, Groups E, F G • Class III

Accessories

Standard Kit Options



V-MIC™ for victim location in structural collapse or rescue.

Portable Cable Reel for cable lengths of up to 1000 feet.



Push-To-Mute Switch: Optional for supervisor position. Can be locked on or used as a momentary mute.

Rope and Cable Coupler: Used to connect two Rescom® Communication Ropes together, when properly tied off, or two *DuraCORE™* cables.



Rescom Ropebag: constructed from sturdy fabric comes with a clear pouch for rope logs, carry handle and shoulder strap. **SMALL** holds 100 ft. rope. **LARGE** holds 300 ft. rope.

Rescom® N.F.P.A. Compliant Communications Rope Kits

MODEL #	KIT DESCRIPTION
RK3MR-030	3 Man Kit Includes: 2x100' (30m) Rescom® Communication Ropes, 1x50' (15m) <i>DuraCORE™</i> Cable, 1 x DMI-S10, 2 x DSI-SW12/T, 1 x C84H Junction Box, 2 Small Rope Bags, 1 Equipment Case.
RK3MR-091	3 Man Kit Includes: 2 x 300' (91m) Rescom® Communication Ropes, 1 x 50' (15m) <i>DuraCORE™</i> Cable, 1 x DMI-S10, 2 x DSI-SW12/T, 1 x C84H Junction Box, 2 Large Rope Bags, 1 Equipment Case.
RK5MR-030	5 Man Kit Includes: 4 x 100' (30m) Rescom® Communication Ropes, 1 x (15m) 50' <i>DuraCORE™</i> Cable, 1 x DMI-S10, 1 x DMI-SW12/T, 3 x DSI-SW12/T, 1 x C86H Junction Box, 4 Small Rope Bags, 1 Equipment Case.
RK5MR-091	5 Man Kit Includes: 4 x 300' (91m) Rescom® Communication Ropes, 1 x 50' (15m) <i>DuraCORE™</i> Cable, 1 x DMI-S10, 1 x DMI-SW12/T, 3 x DSI-SW12/T, 1 x C86H Junction Box, 4 Medium Rope Bags, 1 x Equipment Case.
RK5MRW-091	Watertight 5 Man Kit Includes: 4 x 300' (91m) Rescom® Communication Ropes, 1 x (15m) 50' <i>DuraCORE™</i> Cable, 1 x DMI-S10, 1 x DMI-SW14/T (watertight), 3 x DSI-SW14/T (watertight), 1 x C86H Junction Box, 4 Medium Rope Bags, 1 x Equipment Case.
RK7MR-091	7 Man Kit Includes: 6 x 300' (91m) Rescom® Communication Ropes, 1 x 50' (15m) <i>DuraCORE™</i> Cable, 1 x DMI-S10, 1 x DMI-SW12/T, 5 x DSI-SW12/T, 1 x C88H Junction Box, 6 x Medium Rope Bags, 1 x Equipment Case.

DuraCORE™ Performance Communication Cable Kits

MODEL #	KIT DESCRIPTION
RK3MC-030	3 Man Kit Includes: 2 x 100' (30m) Cables, 1 x 50' (15m) Cable, 1 x DMI-S10, 2 x DSI-SW12/T, 1 x C84H Junction Box, 1 x Equipment Case.
RK3MC-091	3 Man Kit Includes: 2 x 300' (91m) Cables, 1 x 50' (15m) Cable, 1 x DMI-S10, 2 x DSI-SW12/T, 1 x C84H Junction Box, 1 x Equipment Case.
RK5MC-030	5 Man Kit Includes: 4 x 100' (30m) Cables, 1 x 50' (15m) Cable, 1 x DMI-S10, 1 x DMI-SW12/T, 3 x DSI-SW12/T, 1 x C86H Junction Box, 1 x Equipment Case.
RK5MC-091	5 Man Kit Includes: 4 x 300' (91m) Cables, 1 x 50' (15m) Cable, 1 x DMI-S10, 1 x DMI-SW12/T, 3 x DSI-SW12/T, 1 x C86H Junction Box, 1 x Equipment Case.
RK5MCW-091	Watertight 5 Man Kit Includes: 4 x 300' (91m) Cables, 1 x 50' (15m) Cable, 1 x DMI-S10, 1 x DMI-SW14/T, 3 x DSI-SW14/T, 1 x C86H Junction Box, 1 x Equipment Case.
RK7MC-091	7 Man Kit Includes: 6 x 300' (91m) Cables, 1 x 50' (15m) Cable, 1 x DMI-S10, 1 x DMI-SW12/T, 5 x DSI-SW12/T, 1 x C88H Junction Box, 1 x Equipment Case.

Applications

Public Utilities	TUNNELS, WATER, VAULTS, BOILERS, FURNACES
Chemical Processing Plants	STORAGE VESSELS, PIPES, PROCESS REACTORS, TANKS, VATS
Chemical Distillation Plants	OXIDATION TANKS, CHEMICAL VATS, TANKS
Tele-communications Providers	UNDERGROUND TUNNELS
Refineries	TOWERS, TANKS, PIPELINES, BOILERS, FURNACES
Water Reclamation	WASTEWATER MANAGEMENT, TUNNELS, PIPES, SEWERS, PITS, TANKS, DRY AND WET WELLS
Breweries	VATS AND FERMENTATION VESSELS
Environmental Services	HAZMAT, SEWERS, TUNNELS, MANHOLES, DITCHES, SEPTIC & HOLDING TANKS
Manufacturing	SMOKE STACKS, TUNNELS, HOLDING TANKS
Nuclear	REACTOR VAULTS, INSPECTION
Fire Departments/Rescue	HIGH ANGLE, EXTRICATION, CONFINED SPACE RESCUE
Training Facilities	RESCUE, HIGH ANGLE RAPPELLING
Agricultural	SILOS, MILLS, GRAIN ELEVATORS
Shipping	SHIP'S HOLDS, COMPARTMENTS
Mining	RESCUE, OPEN PITS
Aircraft	WING FUEL TANKS, AIRCRAFT SECTIONS, RIVETTING, DE-ICING
Maintenance	SANDBLASTING, WATERBLASTING, WELDING, CLEAN-UP

For more information:

RESCOM[™]
sales inc.

1-800-665-2740

www.rescom.us